



Registration

- Program prices vary according to age-appropriate teacher/child ratios and the number of class meetings in a session.
- Registrations will be accepted on a first-come first-served basis.
- Registration is strictly done online at AaronMilkenCenter.org/ParentingCenter.
- Payment must be made in full.
- For additional information about our program and/or to confirm an online registration, please contact our office at 310.889.2248 or ECEC@aaronmilkencenter.org.
- **ALL CLASSES WILL BE AT LEO BAECK CAMPUS (1300 N SEPULVEDA BLVD, LOS ANGELES, CA 90049)**

Classes will not be held on

- Mondays:**
Nov. 25 - Thanksgiving Break
- Tuesdays:**
Nov. 26 - Thanksgiving Break
- Wednesdays:**
Nov. 27 - Thanksgiving Break
- Thursdays:**
Oct. 3 - Rosh Hashanah
Oct. 17 - Sukkot
Oct. 24 - Simchat Torah
Nov. 28 - Thanksgiving Break

- Fridays:**
Oct. 4 - Rosh Hashanah
Oct. 11 - Half Day,
Early Dismissal Yom Kippur
Oct. 25 - AMC no school
Nov. 1 - Parent/Teacher
Conferences
Nov. 29 - Thanksgiving Break

aaron milken center
at WISE

aaronmilkencenter.org 310.889.2248
ECEC@aaronmilkencenter.org

Parenting Center Policies

- Full payment is required at time of registration.
- No refunds will be given after the first week of classes. There is a \$50 non-refundable processing fee when making any changes or cancellations.
- There will be no make-up classes.
- We have a minimum of five (5) students per class. Classes with insufficient enrollment will be canceled and we will do our best to find a comparable class for you and your child. If we are unable to find a class that works for your schedule, you will be given a refund.
- We offer a 15% discount on the second twin enrolled in the same class. Discounts will be given after both children have been registered online. To request your 15% refund, please contact Jenna Pitson at 310.889.2365 or email JPitson@aaronmilkencenter.org once you have received confirmations for both children.
- In the event that a class is divided into two groups, it is at the school's discretion to create class assignments.
- We do not allow try-outs unless class has been in session for at least two weeks and we have room in the class. A \$50 day-of charge will be applied prior to the start of the class and will be applied to total pro-rated cost if registration occurs. One try-out per session.
- Caregivers and nannies are welcome in many classes. Some classes are designated as "Parent/grandparent required". These classes involve either a group discussion or activity that is specifically designed for parent/grandparent participation. We ask that you please send only a parent or grandparent to these classes.
- Unfortunately, we are unable to accommodate siblings during class times. We kindly ask that you find alternative arrangements for siblings who need coverage during our scheduled classes.

Meet the Team

Jayne Rosen
Director, Aaron Milken Center

Jennifer West
Curriculum Director

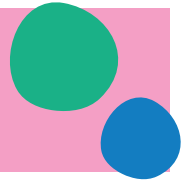
Rachel Mitzman
Program Coordinator


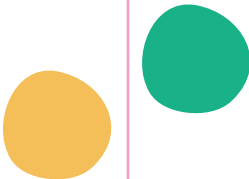
Jenna Pitson
Parenting Center Coordinator

Geneve Turndorf
Parenting Center Coordinator

Parenting Center Fall Session

Monday, September 9 - Friday, December 20



Monday	Tuesday	Wednesday	Thursday	Friday
<p>Nearly Nursery** (Application submitted for Stepping Stones 2025) (DOB: Jul. 2022 - Dec. 2022) 9:30 - 11:30 a.m.</p> <p>Number of Sessions: 28 Price: \$1905</p>	<p>Messy Art° 20+ months (DOB: Jan. 2023 & earlier) 9:30 - 10:45 a.m.</p> <p>Number of Sessions: 14 Price: \$770</p>	<p>Nearly Nursery (Application submitted for Stepping Stones 2025) (DOB: Jul. 2022 - Dec. 2022) 9:30 - 11:30 a.m.</p>	<p>Nearly Shabbat* 12-24 months (DOB: Oct. 2022 - Oct. 2023) 10-11:15 a.m.</p> <p>*Start Date: Oct 31* Number of Sessions: 7 Price: \$385</p>	<p>Shabbat & Me* 14-19 months (DOB: Feb. 2023 - Jul 2023) 9:30 - 10:45 a.m.</p> <p>Number of Sessions: 11 Price: \$605</p>
<p>Sensory Exploration° 14 -19 months (DOB: Feb. 2023 - Jul. 2023) 9:30 - 10:30 a.m.</p> <p>Number of Sessions: 14 Price: \$700</p>	<p>BeatBuds  6-24 months (DOB: Sep. 2022 - Mar. 2024) 1 - 1:45 p.m.</p> <p>Number of Sessions: 13 Sep.10, 17*,24 Oct. 8, 15, 22*, 29 Nov. 5, 12, 19* Dec. 3, 10, 17</p> <p>°Classes will be held 1:20-2:05 p.m. Price: \$625</p>	<p>Sensory Exploration JR° 9 - 14 months (DOB: Jul. 2023 - Dec. 2023) 11:30 a.m. - 12:30 p.m.</p> <p>Number of Sessions: 14 Price: \$700</p>	<p>Grandparent & Me* 16 - 30 months DOB: Mar. 2022 - May 2023) 10:15 - 11:45 a.m.</p> <p>Number of Sessions: 11 Price: \$660</p>	<p>Shabbat & Me* 20+ months (DOB: Jan 2023 & earlier) 9:30 - 10:45 a.m.</p> <p>Number of Sessions: 11 Price: \$605</p>
		<p>Infant & Me* 3 - 10 months (DOB: Nov. 2023 - Jun. 2024) 1 p.m. - 2 p.m.</p> <p>*Start Date: Oct 30* Number of Sessions: 7 Price: \$350</p>	<p>Grandparent & Me* 3 - 15 months (DOB: Jun. 2023 - Jun. 2024) 12:45 - 2 p.m.</p> <p>Number of Sessions: 11 Price: \$638</p>	<p>Shabbat & Me* 6-14 months (DOB: Jul. 2023 - Mar. 2024) 12:30 - 1:30 p.m.</p> <p>Number of Sessions: 10 Price: \$500</p>
				

° Sensory Activities may include the use of gluten products.

* Parent/Grandparent required.

** Nearly Nursery is a 2-day program, Monday and Wednesday.
A parent is requested for Monday. (Discussion day)