



## Registration

- Program prices vary according to age-appropriate teacher/child ratios and the number of class meetings in a session.
- Registrations will be accepted on a first-come first-served basis.
- Registration is strictly done online at [AaronMilkenCenter.org/ParentingCenter](http://AaronMilkenCenter.org/ParentingCenter).
- Payment must be made in full.
- For additional information about our program and/or to confirm an online registration, please contact our office at 310.889.2365 or [ECEC@aaronmilkencenter.org](mailto:ECEC@aaronmilkencenter.org).

## Classes will not be held on

### **Mondays:**

Sep. 22 - Half Day, Early Dismissal Rosh HaShanah

### **Tuesdays:**

Sep. 23 - Rosh HaShanah

Oct. 7 - Sukkot

Oct. 14 - Sh'mini Atzeret

Nov. 11 - Professional Development

### **Wednesdays:**

Sep. 24 - Rosh HaShanah

Oct. 1 - Half Day, Early Dismissal Yom Kippur

Nov. 26 - Thanksgiving Break

### **Thursdays:**

Oct. 2 - Yom Kippur

Nov. 27 - Thanksgiving Break

### **Fridays:**

Oct. 31 - Parent/Teacher Conferences

Nov. 28 - Thanksgiving Break



[aaronmilkencenter.org](http://aaronmilkencenter.org) 310.889.2248  
[ECEC@aaronmilkencenter.org](mailto:ECEC@aaronmilkencenter.org)

## Parenting Center Policies

- Full payment is required at time of registration.
- No refunds will be given after the first week of classes. There is a \$50 non-refundable processing fee when making any changes or cancellations.
- There will be no make-up classes.
- We have a minimum of five (5) students per class. Classes with insufficient enrollment will be canceled and we will do our best to find a comparable class for you and your child. If we are unable to find a class that works for your schedule, you will be given a refund.
- We offer a 15% discount on the second twin enrolled in the same class. Discounts will be given after both children have been registered online. To request your 15% refund, please contact Jenna Pitson at 310.889.2365 or email [JPitson@aaronmilkencenter.org](mailto:JPitson@aaronmilkencenter.org) once you have received confirmations for both children.
- In the event that a class is divided into two groups, it is at the school's discretion to create class assignments.
- We do not allow try-outs unless class has been in session for at least two weeks and we have room in the class. A \$50 day-of charge will be applied prior to the start of the class and will be applied to total pro-rated cost if registration occurs. One try-out per session.
- Caregivers and nannies are welcome in many classes. Some classes are designated as "Parent/grandparent required". These classes involve either a group discussion or activity that is specifically designed for parent/grandparent participation. We ask that you please send only a parent or grandparent to these classes.
- Unfortunately, we are unable to accommodate siblings during class times. We kindly ask that you find alternative arrangements for siblings who need coverage during our scheduled classes.

## Meet the Team

### **Sarah Kaber**

Senior Director of Education

### **Jayne Rosen**

Director, Aaron Milken Center

### **Jennifer West**

Curriculum Director

### **Rachel Mitzman**

Program Coordinator

### **Jenna Pitson**

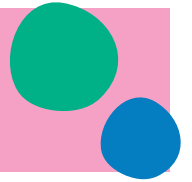
Parenting Center Co-Director


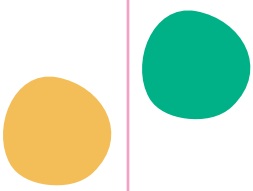
### **Genene Turndorf**

Parenting Center Director

# Parenting Center Fall Session

## Monday, September 8 - Friday, December 19



Monday	Tuesday	Wednesday	Thursday	Friday
<b><u>Nearly Nursery**</u></b> (Application submitted for Stepping Stones 2026) (DOB: Jul. 2023 - Dec. 2023) <b>9:30 - 11:30am</b>  Number of Sessions: 28 Price: \$1988	<b><u>Messy Art°</u></b> <b>20+ months</b> (DOB: Jan. 2024 & earlier) <b>9:30 - 10:45am</b>  Number of Sessions: 11 Price: \$640	<b><u>Nearly Nursery</u></b> (Application submitted for Stepping Stones 2026) (DOB: Jul. 2023 - Dec. 2023) <b>9:30 - 11:30am</b>	<b><u>Nearly Shabbat</u></b> <b>12-24 months</b> (DOB: Sep. 2023 - Sep. 2024) <b>9:45 - 11am</b>  Number of Sessions: 13 Price: \$755	<b><u>Shabbat &amp; Me*</u></b> <b>14-19 months</b> (DOB: Feb. 2024 - Jul 2024) <b>9:30 - 10:45am</b>  Number of Sessions: 13 Price: \$755
	<b><u>Sensory Exploration°</u></b> <b>14-19 months</b> (DOB: Feb. 2024 - Jul. 2024) <b>9:30 - 10:45am</b>  Number of Sessions: 11 Price: \$640	<b><u>Sensory Exploration JR°</u></b> <b>9 - 14 months</b> (DOB: Jul. 2024 - Dec. 2024) <b>11:30am - 12:30pm</b>  Number of Sessions: 12 Price: \$635	<b><u>Grandparent &amp; Me*</u></b> <b>16 - 30 months</b> DOB: Mar. 2023 - May 2024) <b>10:15 - 11:45am</b>  Number of Sessions: 13 Price: \$820	<b><u>Shabbat &amp; Me*</u></b> <b>20+ months</b> (DOB: Jan 2024 & earlier) <b>9:30 - 10:45am</b>  Number of Sessions: 13 Price: \$755
	<b><u>BeatBuds</u></b>  <b>6-18 months</b> (DOB: Sep. 2024 - Mar. 2025) <b>1 - 1:45pm</b>  <b>Number of Sessions: 11</b> <b>Sep. 9*, 16*, 30</b> <b>Oct. 21, 28</b> <b>Nov. 4, 18*, 25</b> <b>Dec. 2, 9, 16</b>  *Classes will be held 1:20-2:05 p.m. Price: \$550	<b><u>Baby &amp; Me*</u></b> <b>3 - 10 months</b> (DOB: Nov. 2024 - Jun. 2025) <b>12:45 - 1:45pm</b>  Number of Sessions: 12 Price: \$635	<b><u>Grandparent &amp; Me*</u></b> <b>3 - 15 months</b> (DOB: Jun. 2024 - Jun. 2025) <b>12:45 - 2pm</b>  Number of Sessions: 13 Price: \$755	<b><u>Shabbat &amp; Me*</u></b> <b>6-14 months</b> (DOB: Jul. 2024 - Mar. 2025) <b>12:30 - 1:30 p.m.</b>  Number of Sessions: 13 Price: \$690
				

\*\*Nearly Nursery is a 2-day program, Monday & Wednesday. A parent is requested for Monday. (Discussion day)

\* Parent/Grandparent required.

° Sensory activities may include the use of gluten products.